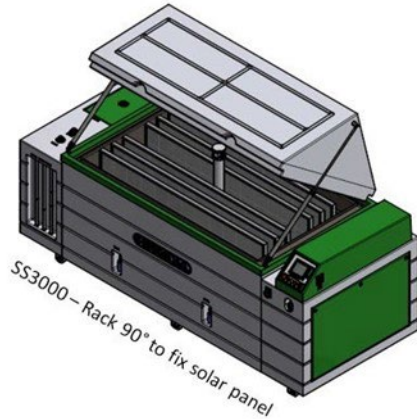


Salt Spray Cyclic Test Chamber SS Series



Illustrative Photo SS1300



SS3000 – Rack 90° to fix solar panel



Touch Screen- SD Data Logger



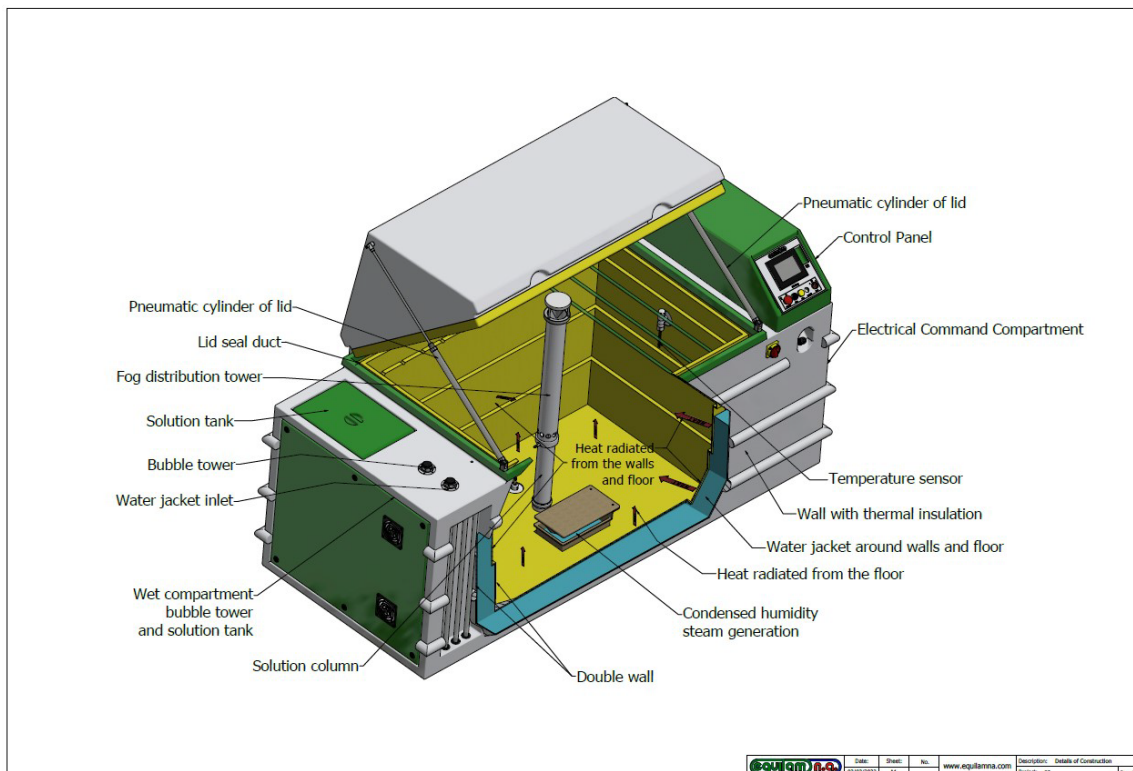
Specimen inside the chamber



Inclined Rack for Coupons

- Indirect heating of the internal cabinet through the water jacket (ASTM B117), ensuring great homogeneity of the internal temperature of the test cabinet.

- US PATENT # 10371623 – Made entirely of fiberglass – Special Resin



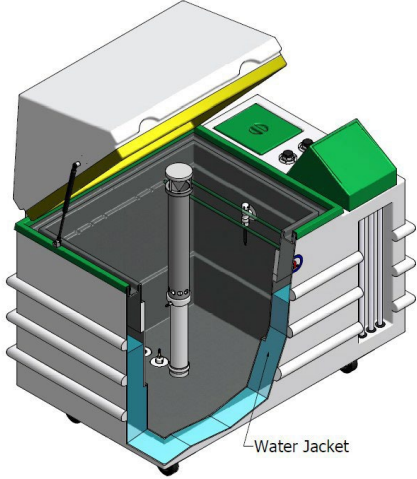
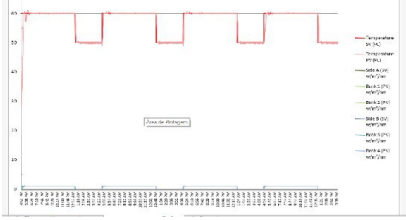


Allows you to program multiple fully automatic cycles with 4 different modes:

- Salt Spray (Fog) Mode (ASTM B117 / ISO 9227 / JIS Z2371 / DIN 50021)
- Humidity Mode (ASTM D2247 / ASTM D1735 /ISO 6270-2)
- Natural Dry Mode
- Soak Mode

ASTM G 85 A3 (SWAAT TEST - Optional) Mode.

Models				
	SS600	SS1300	SS30	SS5000
Internal Dimension W x D x H (mm)	32.3" x 25.6" x 30.7" (820 x 650 x 780)	51.2" x 30.7" x 35.4" (1,400 x 850 x 850)	81.9" x 42.5" x 39.4" (2,050 x 1,080 x 1,000)	78.8" x 59.1" x 39.4" (2,000 x 1,500 x 1,000)
External Dimension Lid open W x D x H (mm)	74.5" x 43.3" x 30.7" (1,890 x 1,100 x 1,440)	97.7" x 45.3" x 66.9" (2,480 x 1,150 x 1,700)	133.9" x 63.0" x 70.9" (3,400 x 1,600 x 1,800)	150.0" x 70.9" x 82.7" (3,800 x 1,800 x 2,100)
Approx. Crated Dimensions W x D x H (mm)	63" x 45.3" x 67" (1,600 x 1,150 x 1,700)	102.4" x 51.2" x 72.9" (2,600 x 1,300 x 1,850)	140" x 70" x 83" (3,550 x 1,700 x 2,110)	Pallets / Container
Approximate net weight.	452 lbs (205 kg)	802 lbs (364 kg)	1,210 lbs (550 kg)	1,962 lbs (890 kg)
Approximate Shipping Weight.	551 lbs (250 kg)	919 lbs (417 kg)	1,874 lbs (850 kg)	2,204 lbs (1,000 Kg)
Approximate test – Lid Included Approx.	21.2 cu.ft (600 L)	45.9 cu.ft (1,300 L)	106.0 cu.ft (3,000 L)	176.6 cu.ft (5,000 (L)
FLA (208 ~ 230 V 50/60 Hz– 1 φ)	25 Amp.	35 Amp.	35 Amp	45 Amp.
Chamber exhaust pipe without siphon PVC.	2"	2"	4"	4"
Technical Specifications:				
Chamber Temperature Salt Spray Range:	Ambient + 9°F (5°C) - +131°F (55°C)			
Bubble Tower Temperature Salt Spray Range:	Ambient + 9°F (5°C) - +165°F (74°C)			
Collect fog per ASTM B 117	Fog collection Range: 1.0 - 2.0 ml/hour, continuous 16 hours of test. (others consult us)			
Condensation Humidity Temperature Range:	Ambient + 9°F (5°C) - +140°F (60°C)			
Natural Dry Temperature and Relative Humidity Range:	Ambient (labs) Temperature x Relative			
Soak Temperature Range:	Ambient + 9°F (5°C) - +140°F (60°C)			

<p>Bubble Tower with constant level, no auxiliary tank necessary for long duration test</p>	
<p>Centralized Atomization Nozzle with distribution tower and cone in accordance with: ASTM B117, pg. 4, Annex "A" ISO 9227, JIS Z 2371</p>	
<ul style="list-style-type: none"> - Designed entirely in fiberglass (US patent 10371623) Indirect Heating through water jacket according to ASTM B117 to ensure that no metallic heating will affect corrosivity of testing results. - Lid engineered with smooth surface, without seams, per ASTM B117, drops of solution which accumulate on the ceiling of the chamber shall not be permitted to fall on the specimens being exposed. - Unibody construction incorporating solution tank, bubble tower in one cabinet. - Central Atomization Tower engineered to ASTM B117 standards ensuring collect fog uniformity and homogenous results. 	
<p>Data Acquisition Software - option:</p> <ul style="list-style-type: none"> - By PC (RS 232, USB or RS 485) - 2 types: PC or SD Card. 	
<p>Lid safety system</p>	<p>Included</p>
<p>Visual and audible security system</p>	<p>Included</p>
<p>Alarm message on touch screen</p>	<p>Included</p>
<p>Critical test parameters displayed on one screen</p>	<p>Included</p>
<p>20 programmed test</p>	<p>included</p>

Preventive maintenance messages are automatically shown on the touch screen	Included
Error messages displayed	included
Pneumatic lid with safety systems	Included
External collect Fog	Included
Mult-day, continuous test tank. - Maximum and minimum level indication. - Automatic mixing solution during the test – settable in panel touch screen.	included
Electrical panel built to meet CE / UL508A. UL508A Certification contact us – Optional	Included
Recommended Lab conditions	Temperature: 63 °F (17°C) - 82°F (28°C), Relative humidity: Maximum 85% (without condensation)
Test water requirement	ASTM D 1193 Type IV
DEI water pressure	7 to 14 psi (0.5 to 1.0 kgf/cm ²)
DEI water input Ø	1/2"
Constant Pressure	56 psi +/- 0.7 psi (4 kgf/cm ²)
Drink Water Supply	Chamber cleaning
Corrosive Agent	Per Standard
Lab exhaust	Fume Hood and motor – if necessary
Drain	½" PVC tubing or PVC drain 4" at least
Measurement items: pH, Conductivity NaCl concentration	In accordance with ASTM B117, JIS Z2374, ISO 9227, ASTM G85 A3, ASTM D2247, ASTM D1735
Service Area	minimum of 19.6" (50 cm) for an easier cleaning, assembling and maintenance
<p>1 (One) Year Parts Warranty against manufacturing defects from date of delivery at customer's site. This assumes equipment is used under normal operating conditions in accordance with the instruction manual. This warranty does not apply to glassware (lamps). In case of non-warranty issues during warranty period, actual expenses shall apply.</p>	
<p>Note 1: All our equipment is delivered with Installation, Maintenance and User Manual. We believe this material is enough for the correct use of the equipment. We are available for further questions and clarifications. Additionally, if desired, we can provide the technicians to assemble the equipment and conduct staff training at the client's site. (Cost available upon request).</p>	
<p>Note 2: Appearance and specifications of equipment are subject to change without prior notice.</p>	

Note 3: We highly recommend that you don't use the same chamber for different solutions, e.g. don't use a Salt Spray chamber for CASS; Kesternich (SO₂) test or CASS chamber for humidity test due the chemical contamination that may distort the results. See item 4.6 of Standard ISO 9227.

Optional Accessories

CODE: EQOP.0003 • (1) rack - 15° or 20° inclination in accordance with ASTM B117 and ISO 9227.



CODE: EQOP.0005 • Special rack for customer supplied test sample.

CODE: EQOP.0008 • (2) Fog collectors.
ISO 17025 Calibration Certificate



CODE: EQOP.0009 • Pressure regulator with water, oil filter and pressure gauge.



CODE: EQOP.0011 • Fiberglass Fume Hood (hood only).



CODE: EQOP.0012 • Fiberglass axial fan assembly
capacity: 1940 cfm.
Net weight: 88 lbs. (40 kg).



CODE: EQOP.0013 • DI Water assembly includes:
activated carbon water filter, DI column, LED
water quality
indicator.



CODE: EQOP.0014 • Spare DI water column.



CODE: EQOP.0015 • Spare activated carbon water filter.



CODE: EQOP.0016 • pH meter – Digital with standard solution.



CODE: EQOP.0017 • Conductivity meter – Digital with standard solution.



CODE: EQOP.0018 • Density meter to measure concentration of saline solution in accordance with ASTM B 117. ISO 17025 Calibration Certificate.



CODE: EQOP.0019 • Plastic bucket with 50lb Salt EQCORR with chemical analysis traceability certificate ISO 17025 in accordance with ASTM B117, ISO 9227, JIS Z 2371, MILS STD 810G



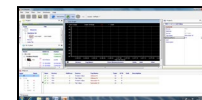
CODE: EQOP.0038 Test Panels – 2.9" x 5" (76mm x 127mm). In accordance with ASTM B 117 (100 Pieces).



CODE: EQOP.0075 • Test Panels – 2.7" x 5.9" (70mm x 150mm). In accordance with ISO 9227 (100 pieces).



CODE: EQOP.0044 • Data Acquisition Software: By PC (RS 232 or USB)



CODE: EQOP.0047 • Digital relative humidity (RH%) indication on the control panel.



CODE: EQOP.0119 • Grid type test brackets supports 120 kg with distributed load.



CODE: EQOP.0035 • Cable port $\varnothing = 2"$ (other, consult us)



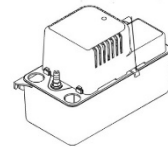
CODE: EQOP.0169 • Inclined specimen holder for 36 screws with Nylon threaded bushings to be defined by the customer (maximum \varnothing 22mm)



CODE: EQOP.0111 • Gas Scrubber – Exhaust system.



CODE: EQOP.0068 • Pump to drain precipitated solution - Salt Spray Chamber



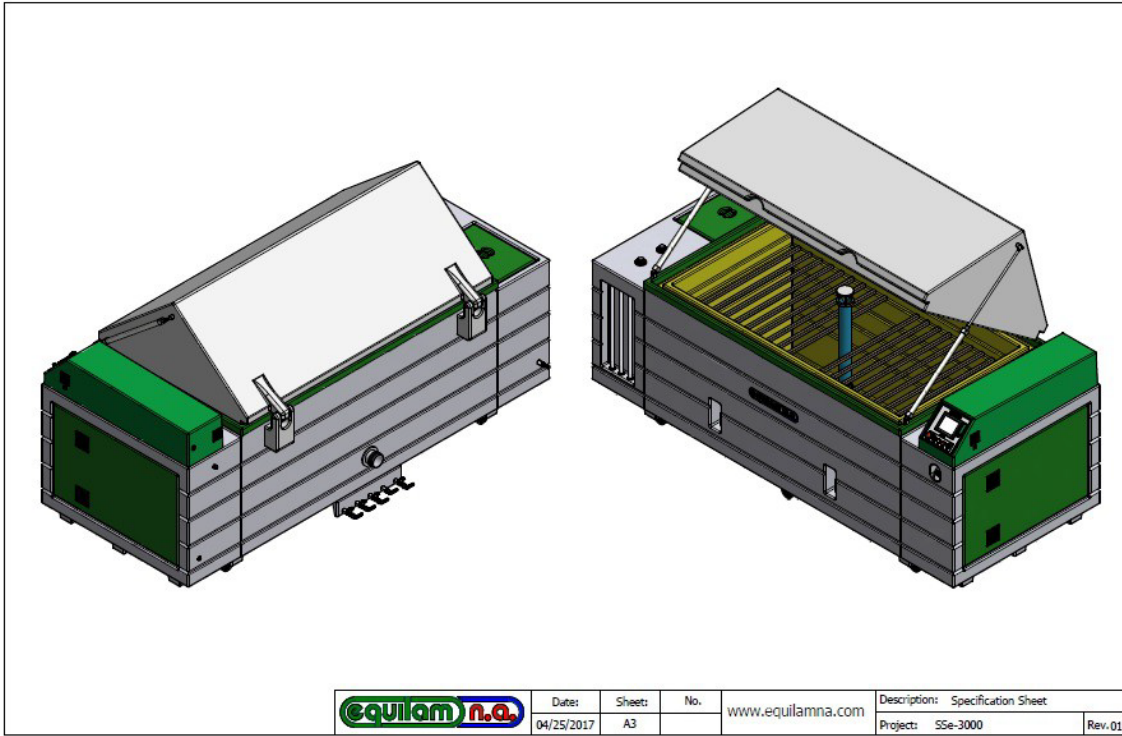
CODE: EQOP.0034 • Solution tank for long term testing capacity 71.3 gal (270 Liters), with automatic solution mix and feed.



CODE: EQOP.0056 • CSA Certificate (Canada)

CODE: EQOP.0007 • Side window in lid to prevent dripping on samples -
ASTM B117 - ISO 9227 –
JIS Z2371 – MILs – DIN 50021





SS 3000



SS 5000



Walk In / Drive In, Consult us.